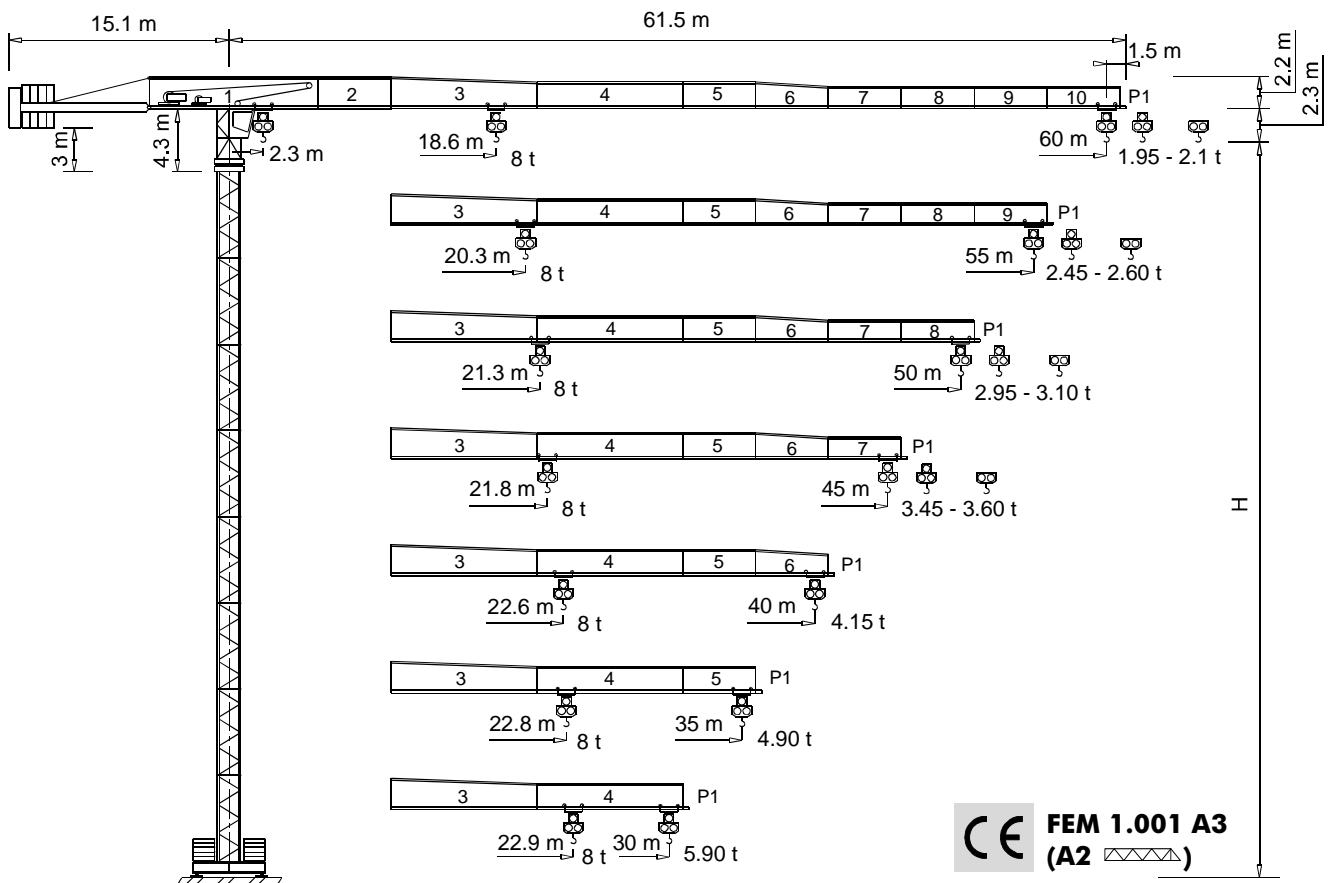


Gru a torre "Flat Top"
"Flat Top" Tower Crane • Grue à tour "Flat Top"
"Flat Top" Turmdrehkran • Grua torre "Flat Top"

"City"

CTT 161-8



simple, available and cost effective™

Diagramma di portata
Load Diagram

I
GB

Curbes de charges
Lastkurven

F
D

Curvas de cargas

E

CTT 161-8

		CTT 161-8											
		10	15	20	25	30	35	40	45	50	55	60	
4 t	- 34.9 m	4	4	4	4	4	3.99	3.42	2.98	2.63	2.34	2.1	
4 t	- 33.96 m	4	4	4	4	4	3.86	3.28	2.84	2.48	2.19	1.95	
8 t	- 18.64 m	8	8	7.39	5.72	4.63	3.86	3.28	2.84	2.48	2.19	1.95	
4 t	- 38.1 m	4	4	4	4	4	4	3.78	3.3	2.91	2.6		
4 t	- 36.97 m	4	4	4	4	4	4	3.64	3.15	2.77	2.45		
8 t	- 20.26 m	8	8	8	6.31	5.11	4.27	3.64	3.15	2.77	2.45		
4 t	- 40.14 m	4	4	4	4	4	4	4	3.51	3.1			
4 t	- 38.91 m	4	4	4	4	4	4	3.87	3.36	2.95			
8 t	- 21.31 m	8	8	8	6.68	5.42	4.53	3.87	3.36	2.95			
4 t	- 41.06 m	4	4	4	4	4	4	4	3.6				
4 t	- 39.78 m	4	4	4	4	4	4	3.97	3.45				
8 t	- 21.78 m	8	8	8	6.85	5.56	4.65	3.97	3.45				
4 t	- 40 m	4	4	4	4	4	4	4					
8 t	- 22.57 m	8	8	8	7.13	5.8	4.85	4.15					
4 t	- 35 m	4	4	4	4	4	4						
8 t	- 22.76 m	8	8	8	7.2	5.85	4.9						
4 t	- 30 m	4	4	4	4	4							
8 t	- 22.92 m	8	8	8	7.26	5.9							

Altre installazioni
Other configurations

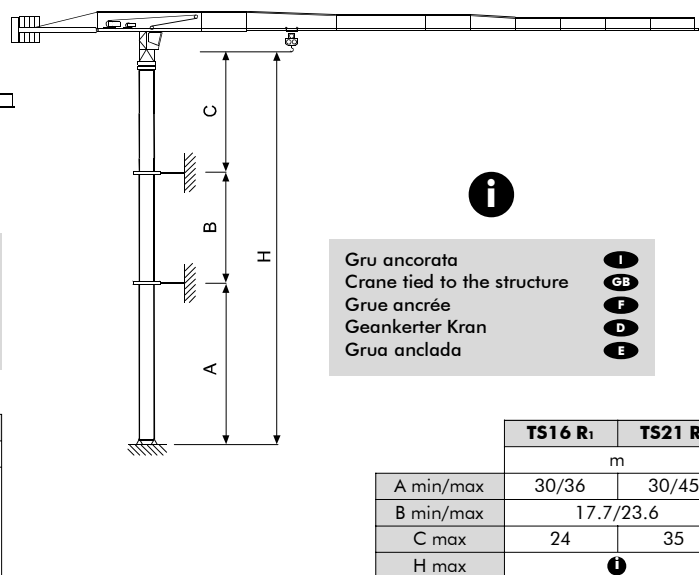
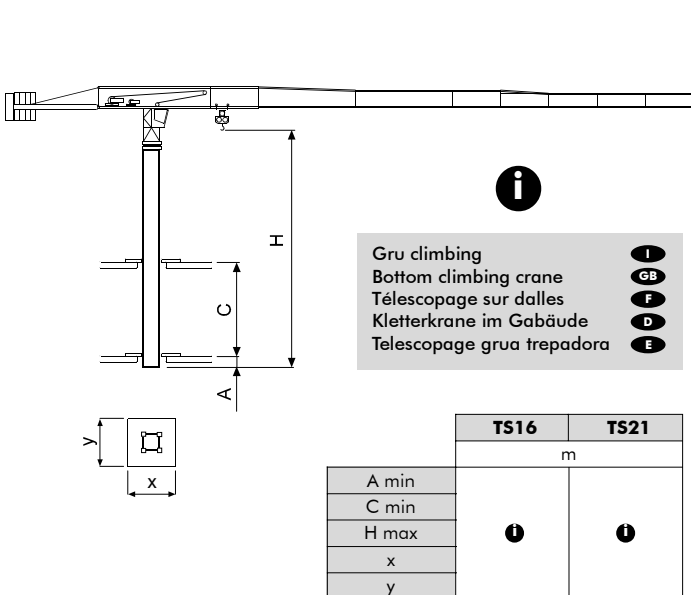
I
GB

Autres implantations
Aufstellmöglichkeiten

F
D

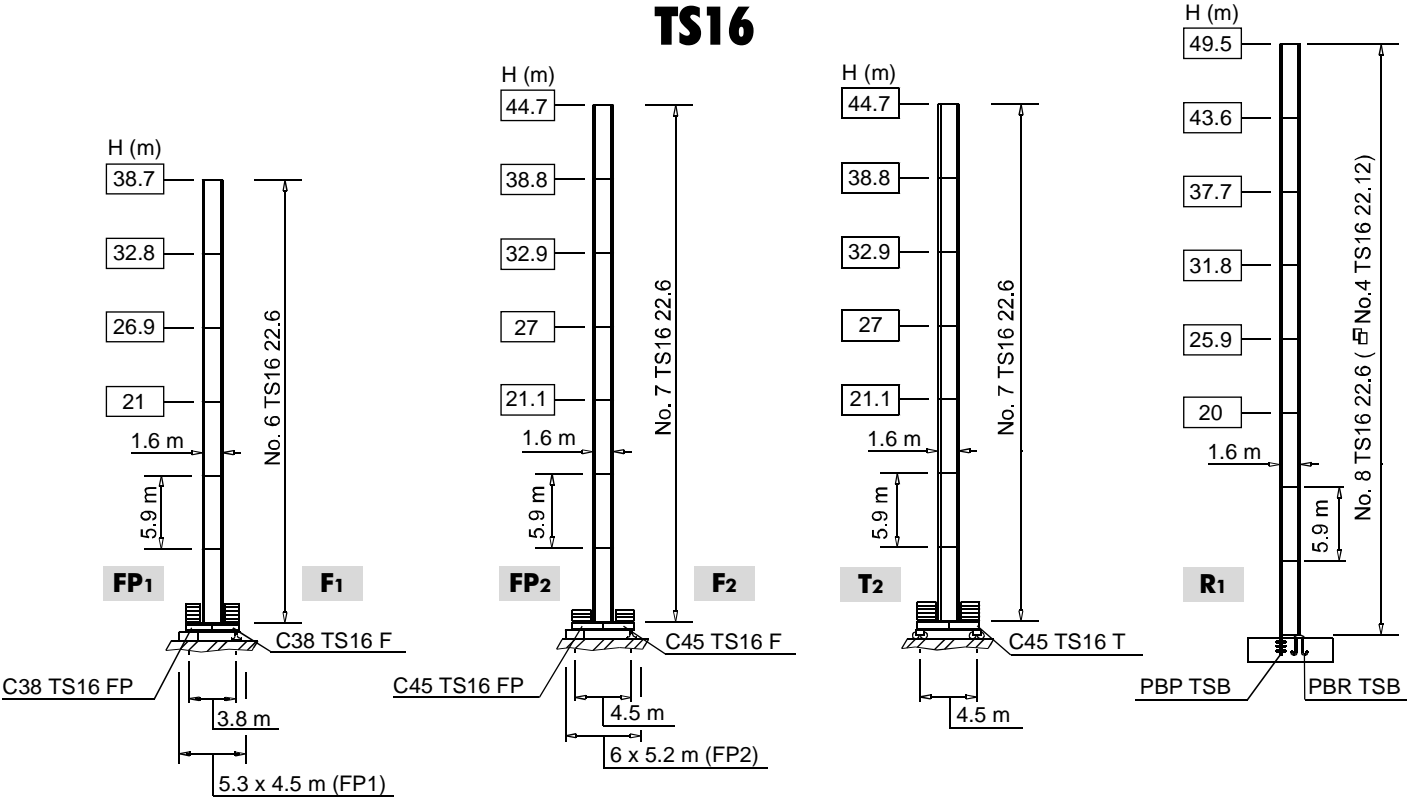
Otras implantaciones

E



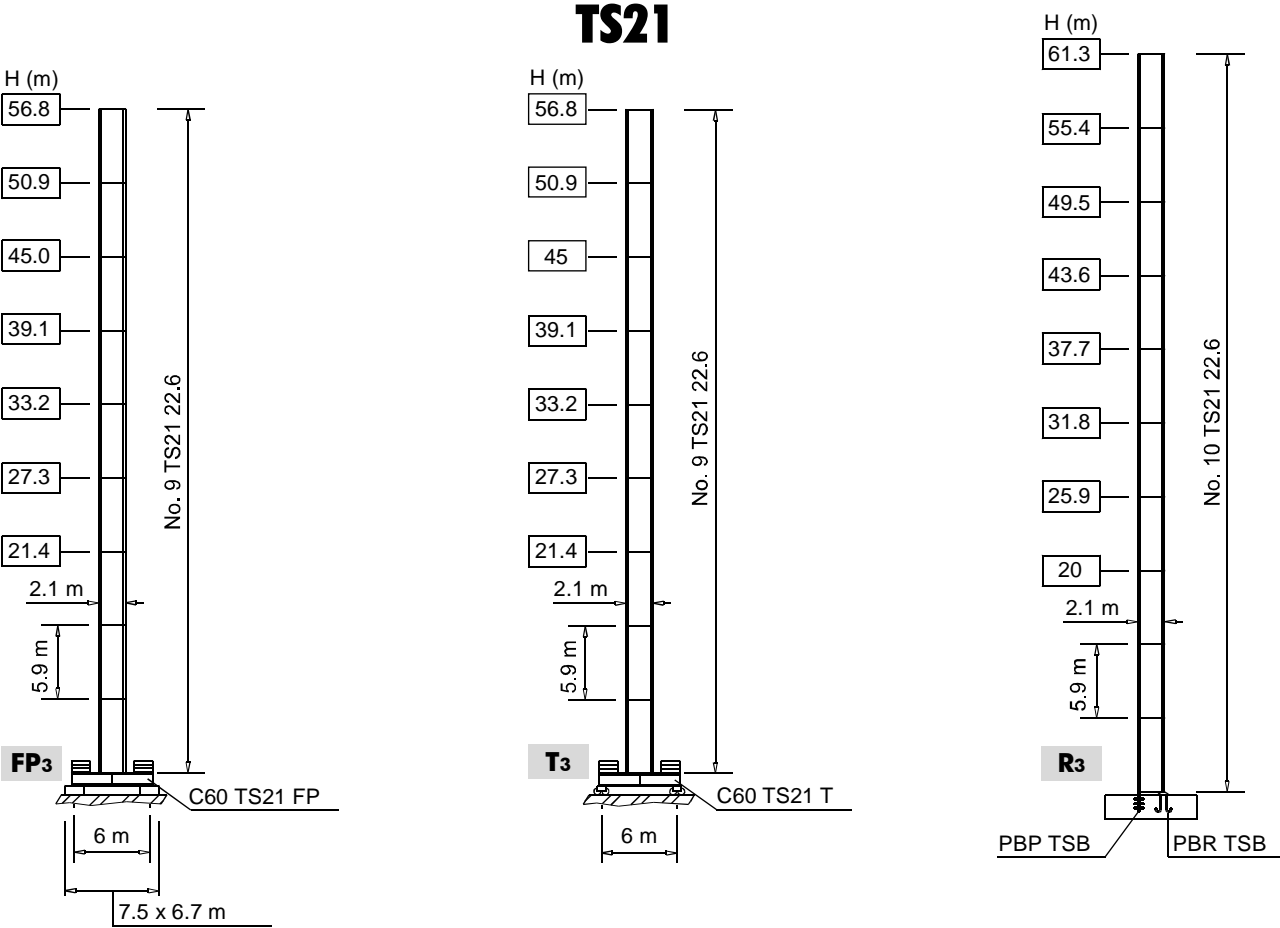
Torre Mast	I GB	Mât Turm	F D	Mástil	E
------------	-----------------------	----------	----------------------	--------	----------

TS16



H	Altezza massima sotto gancho	I	Max. under hook height	GB	Hauteur maxi. sous crochet	F	Höchste Hackenhöhe	D	Maxima altura bajo gancho	E
⊞	Alternativa		Alternative		Alternative		Alternativlösung			Alternativa

TS21



Meccanismi
Mechanisms





I
GB

Mécanismes
Antriebe








F
D



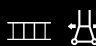


Mecanismos

E

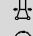

			
 24 APC 40	69 * kVA	400 V - 50 Hz	CE 87/405
30 AFC 40	75 * kVA	400 V - 50 Hz / 460 V - 60 Hz	

* Gru senza traslazione / Crane without travelling equipment / Grue sans translation / Krane ohne Schienenfahren / Grúa sin traslación

		m/min	f	kW		
	24 APC 40		5	4	24	278 m
			29	4		
			58	2		
			2.5	8		
			14.5	8		
			29	4		
	30 AFC 40 (VARIANT)		0 ⇄ 3	4	30	278 m 350 m (LEBUS - VARIANT)
			3 ⇄ 10	4		
			10 ⇄ 41	4		
			41 ⇄ 66	2.38		
			66 ⇄ 82	1.86		
			0 ⇄ 1.5	8		
			1.5 ⇄ 5	8		
			5 ⇄ 20.5	8		
			20.5 ⇄ 33	4.76		
			33 ⇄ 41	3.72		

	DVF 3 5 (VARIANT)	0 ⇄ 6 ⇄ 32 ⇄ 64 m/min	5 kW
	SSR 2 2 65	0.7 r.p.m. (50 Hz) 0.84 r.p.m. (60 Hz)	2 × 65 Nm
	▲ TAD 2RP 2M4	12 - 24 m/min	2 × 4 kW
	● TAD 2RG 4M3		4 × 3 kW
			

	Max. H [m]	
T₂	38.8	> 38.8
T₃	39.1	> 39.1

	Sollevamento	I	Hoisting	GB	Levage	F	Heben	D	Elevación	E
	Traslazione carrello		Trolleying		Distribution		Katzfahren		Distribución	
	Rotazione		Slewing		Orientation		Schwenken		Orientación	
	Traslazione		Travelling		Translation		Schienenfahren		Traslación	
	Direttiva sul livello acustico		Directive on noise level		Directive sur le niveau acoustique		Richtlinie für den Schall-Leistungspegel		Directiva sobre el nivel acustico	
	Consultateci		Consult us		Nous consulter		Auf Anfrage		Consultarnos	
	Potenza totale richiesta		Power requirements		Puissance totale nécessaire		Geforderte Stromstärke		Potencia necesaria	
	Alimentazione		Power supply		Alimentation		Stromversorgung		Alimentación	