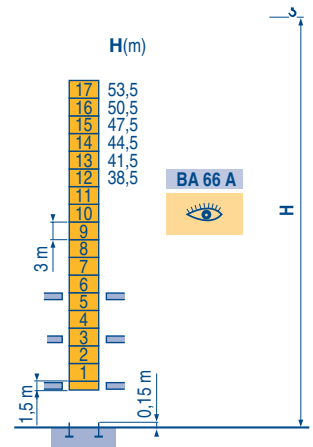
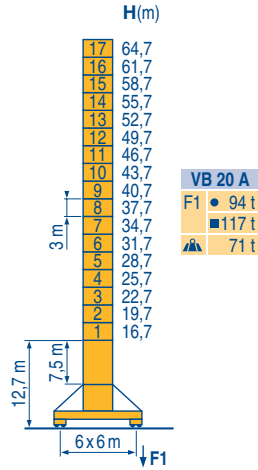
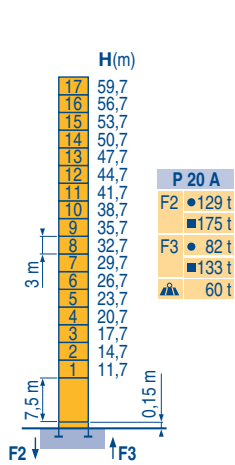


Masts / Reactions

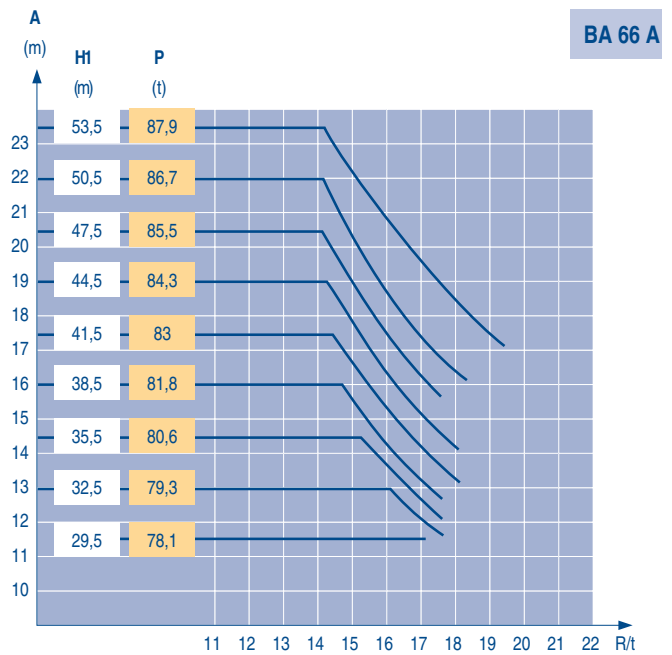
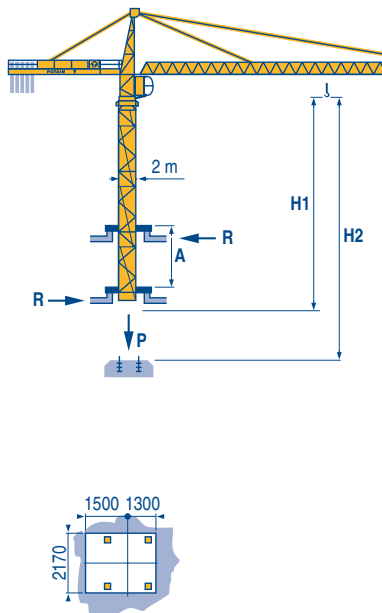
□ 2 m
 ▨ 30 m ⇒ 65 m

MCA 1



Climbing crane

MCA 1



TOPKIT MC 235 B

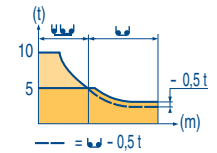
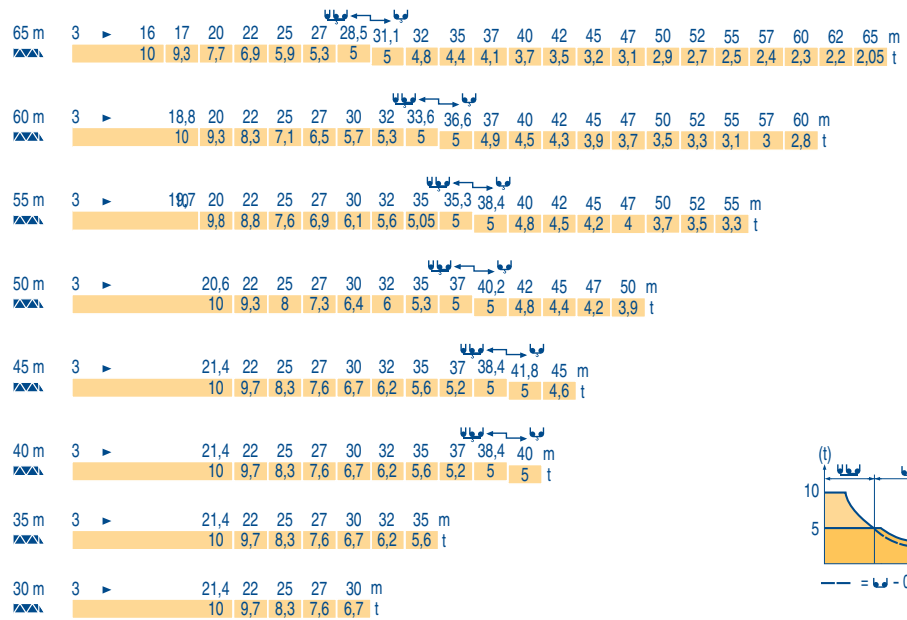


GB

- Reactions in service
- Reactions out of service
- ⚙ Without load, ballast (or transport axles), with maximum jib and maximum height.
- 👁 See climbing crane

Load diagrams

MCA 1



Counter-jib ballast

MCA 1

Height (m)	Counter-jib length (m)	Ballast weight (kg)
65 m	14,5 m	23 600
60 m	14,5 m	21 700
55 m	14,5 m	20 200
50 m	12 m	23 600
45 m	12 m	21 700
40 m	12 m	19 400
35 m	12 m	16 800
30 m	12 m	14 100

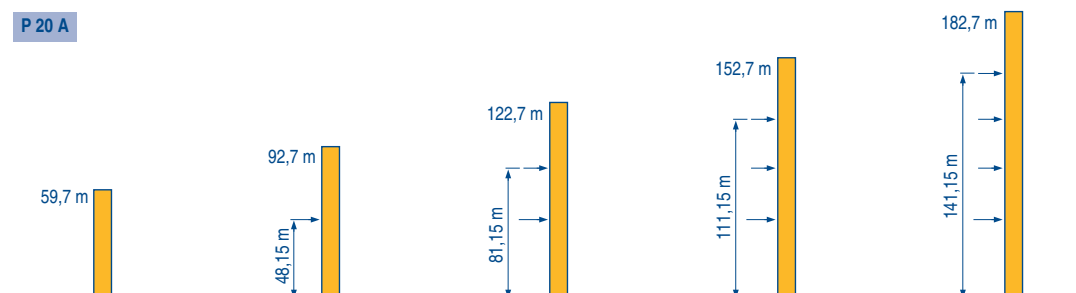
Base ballast

MCA 1

Crane width (m)	Crane model	H (m)	108	84	72	60	48	36	36	36	36	36	36	36	36	36	36	36	36	36	36	36
2 m	VB 20 A - ●	(t)	108	84	72	60	48	36	36	36	36	36	36	36	36	36	36	36	36	36	36	36

Anchorage

MCA 1



TOPKIT MC 235 B

POTAIN

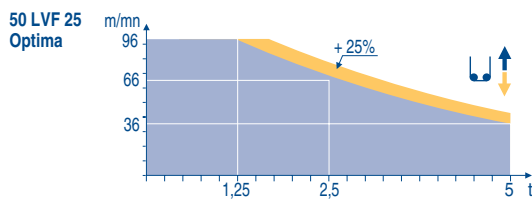
GB

- A Distance between collars
- H1 Crane height
- P Crane weight (in service)
- R Horizontal reaction

Mechanisms

MCA 1

	50 LVF 25 Optima	m/min	3 → 12 → 36 → 46 → 66 → 96	1,5 → 6 → 18 → 23 → 33 → 48	hp	kW	
		t	5 5 5 3,75 25 1,25	10 10 10 7,5 5 2,5	50	37	
	6 D3 V4	m/min	10 - 50 (10 t) - 100 (5t)		6	4,4	
	RCV 185	rpm	0 → 0,8		2 x 9	2 x 6,6	
	VB 20 A RT 544 A1 2V R ≥ 13 m	m/min	13,5 → 27		4 x 7	4 x 5,2	
CEI 38			kVA				
400 V (+6% -10%) 50 Hz		50 LVF : 75kVA		2000/14			



GB

- Hoisting
- Trolleying
- Slewing
- Travelling

In compliance with the EEC Instructions on noise level



This commercial document is not legally binding.
For any technical information, please refer to the corresponding instructions.

Manitowoc
Crane CARE

Manitowoc
Crane Group



Americas

Tel: +1 920 683 6322
Tel: +1 717 597 8121

Europe - Middle East - Africa

Tel : +(33) 4 72 81 50 00
Tel : +(44) 191 565 6281

Asia - Pacific

Tel: +(65) 6861 7133
Fax: +(65) 6862 4142

www.manitowoccrane.com

Manitowoc Crane Group Asia Pte Ltd
Manitowoc Crane Group
26 Benoi Road
Singapore 629898

Tel: 65-6861 7133
Fax: (Admin/ Sales) : 65-6862 4040
Fax: (Service/ Parts) : 65-6862 4142
www.manitowoccrane.com

TOPKIT MC 235 B

Réf. 2004 45 MCA 2

Copyright.Reproduction interdite © POTAIN 2004

Réalisation Sedoc